

Hygrostat (Humidity switch) TW 2001-A



4 016138 1078527

Order. No. 18 79 92

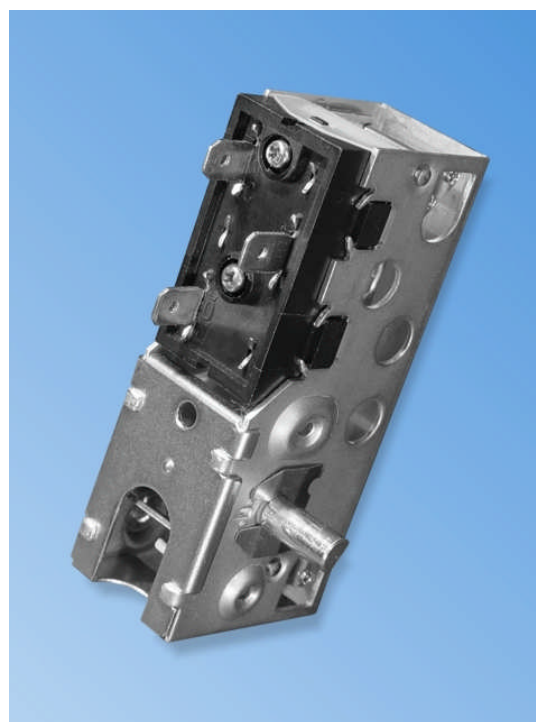


Characteristic features

- ▶ **Low priced universal Hygrostat for various application areas**
- ▶ **Regulation range 10% to 80% rH**
- ▶ **Temperature range 10° to 40°C**
- ▶ **Hysteresis 5% nominal, response time 15 minutes**
- ▶ **Three different type of contact modes: open, closed or reversible contacts**
- ▶ **Contact rating**
 - Closed 240 V AC 5 A
 - Open 240 V AC 2.2 A

Range of application

- ▶ **Air dryer, humidifier, air conditioner**
- ▶ **Building instrumentation**
- ▶ **Agriculture, garden centers**
- ▶ **Replacement market for household appliances**



Application areas

The Hygrostat TW 2001 is an electromechanical regulator for relative humidity. In contrast to electronic devices, the hygrostat does not require any power supply. The switch contact is of high rating and can be directly used for control of electric loads. The switch has contacts for 6.3 mm flat plug.

The physical measuring principle is based on characteristics of hygroscopic polyamide band which is pre-stretched with a spring. The water content in the plastic band is in balance with the relative humidity of surroundings. Depending on the atmosphere humidity, the water content in the polyamide band changes and as a result the length of the band changes. At a certain length, a micro switch gets operated through a lever mechanism.

The switch point setting (10% bis 80 % rH) is done by a rotary switch. At the end position, the switch is always closed or open, independent of the air humidity value.

The item is supplied without housing. The contemporary safety guidelines are to be followed. Electric connections are to be carried out by only trained personnel!

For further information, please visit our website: www.hygrozens.com

Technical data

Humidity switch (Hygrostat)	
Regulation range	10...80 % rH
Application range	10...90 % rH, 10..40° C without condensation
Hysteresis	Nominal 5 % rH (3..8 % rH)
Setting time	Approx. 15 min
Switch rating	Closed 240 V/5A Open 240 V/2.2A
Switching cycles	>6000 (at maximum rating)
Angle of rotation	226°
Axis diameter	6.32 mm
Dimensions L x B x H	85 x 45 x 25 mm
Certifications	VDE, UL und CSA
Model for dryer	TW 2001 A / 18 79 92
Model for humidifiers	TW 2001 B / 18 77 12
Model with reverser	TW 2001 C
Rights reserved for change in technical data due to technological advancements!	

TW 2001-A: Model for control of air dryers. The contact switches on if the limiting value is exceeded (closed). Switch rating 240 V AC / 5 A.

TW 2001-B: Model for control of humidifiers. The contact switches off if the limiting value is exceeded (open). Switch rating 240 V AC / 2.2 A.

TW 2001-C: Universal-model with reversible contact. Switch rating: Open 240 V AC / 2.2 A; Closed 240 V AC / 5 A.

