

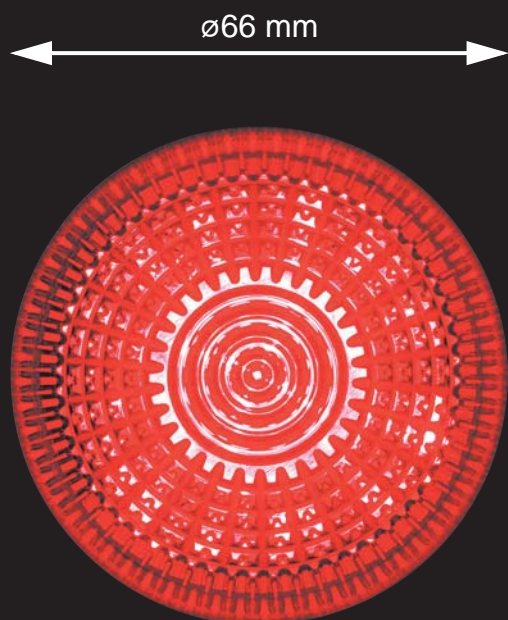
# Ø22 HW Series Jumbo Dome Pilot Lights



## Brilliant and Prominent

Clear and easy recognition from a distance...

...and from the side.



Actual Size



LED



Incandescent



IDEC IZUMI CORPORATION

# ø22mm HW Series Jumbo Dome Pilot Lights

## LED Lamp Ratings

Type No.	Operating Voltage	Rated Current
LSTDB-2*	24V AC/DC ±10%	15 mA

- Specify a lens color code in place of \*.
- A: amber, G: green, R: red, S: blue, Y: yellow

## Incandescent Lamp Ratings

Type No.	Operating Voltage	Power Consumption	Lamp Ratings
LSB-2	24V AC/DC ±10%	3.6W	28V, 0.17A

## Applicable Standards


Safety Standards	File No. or Organization
UL508	UL Listing File No. E68961
CSA C22.2 No. 14	File No. LR21451
EN60947-1 EN60947-5-1	TÜV Rheinland R50051481

## Specifications

Operating Temperature	-25 to +55°C (no freezing)
Storage Temperature	-40 to +80°C (no freezing)
Operating Humidity	45 to 85% RH (no condensation)
Insulation Resistance	100MΩ maximum
Dielectric Strength	2000V, 1 minute
Shock Resistance	Damage limits: 1000 m/s <sup>2</sup> Operating extremes: 100 m/s <sup>2</sup>
Vibration Resistance	Damage limits: 30 Hz, amplitude 1.5 mm Operating extremes: 5 to 55 Hz, amplitude 0.5 mm
Life	LED lamps: Approx. 20,000 hours (Note 1) Incandescent lamps: Approx. 1,000 hours minimum (Note 2)
Degree of Protection	IP65
Terminal Style	M3.5 screw

- Use incandescent lamp types for displaying the muting status (temporary automatic suspension of a safety function, required by IEC61496-1) of equipment such as light curtains.
- Note 1: The luminance reduces to 50% the initial intensity when used on complete DC.
- Note 2: Mean value when used on the rated voltage.

## Types

Shape	Lamp Type	Operating Voltage	Type No.	Lens Color
Jumbo Dome Pilot Light 	LED	24V AC /DC	HW1P-5Q4*	A: amber G: green R: red S: blue W: white Y: yellow
	Incandescent		HW1P-5Q7*	



## Accessories

Accessory	Specifications	Type No.	Ordering Type No.	Package Quantity
Separate Mounting Type Transformer	Primary Voltage	100/110V AC	TWR512	1
		200/220V AC	TWR522	
		400/440V AC	TWR542	
Locking Ring Wrench	Metal. Approx. 150 g	MW9Z-T1	MW9Z-T1	5
Lamp Holder Tool	Rubber	OR-55	OR-55	
Locking Ring	Plastic	HW9Z-LN	HW9Z-LNPN05	

- Separate mounting type transformer is used for LED illuminated pilot lights only.
- Separate mounting type transformer is supplied with a terminal cover.

## Replacement Parts

### • Lens

Shape	Material	Type No.
Jumbo Dome Lens 	Polycarbonate	HW1A-P5*
Diffusing Lens 		HW9Z-PP5C

- Specify a lens color code in place of \*.
- A: amber, G: green, R: red, S: blue, W: white, Y: yellow
- Diffusing lens is used for LED type only.

### • LED Lamps (used for HW Jumbo Dome pilot lights only)

Rated Operating Voltage	Type No.	Illumination Color
24V AC/DC	LSTDB-2*	Specify a color code in place of *. A: amber, G: green, R: red, S: blue, Y: yellow

- Use amber (A) LED lamps for white (W) lenses.

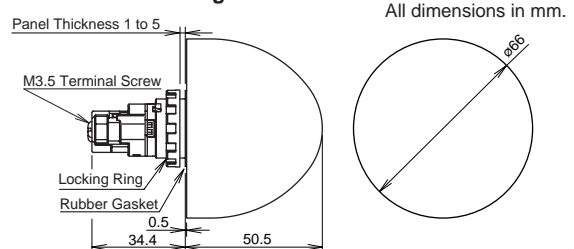
### • Incandescent Lamps (used for HW Jumbo Dome pilot lights only)

Rated Operating Voltage	Type No.	Ordering Type No.	Package Quantity
24V AC/DC	LSB-2	LSB-2PN02	2

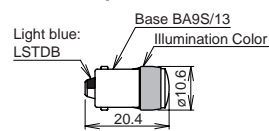
- When replacing lamps, use the lamp holder tool to avoid burn on your hands.

## Dimensions

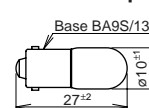
### • Jumbo Dome Pilot Lights



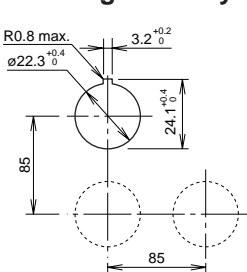
### • LED Lamp LSTDB



### • Incandescent Lamp LSB



## Mounting Hole Layout



Specifications and other descriptions in this catalog are subject to change without notice.



## IDEC IZUMI CORPORATION

7-31, Nishi-Miyahara 1-Chome, Yodogawa-ku, Osaka 532-8550, Japan  
Tel: +81-6-6398-2571, Fax: +81-6-6392-9731  
www.idec.com

**IDEC CORPORATION (USA)**  
1175 Elko Drive, Sunnyvale, CA 94089-2209, USA  
Tel: +1-408-747-0550, Toll Free: (800) 262-IDEC  
Fax: +1-408-744-9055  
E-mail: opencontact@idec.com, www.idec.com

**IDEC CANADA LIMITED**  
Unit 22-151, Brunel Road Mississauga, Ontario,  
L4Z 1X3, Canada  
Tel: +1-905-890-8561, Toll Free: (888) 317-4332  
Fax: +1-905-890-8562

**IDEC ELECTRONICS LIMITED**  
Unit 2, Beechwood, Chineham Business Park,  
Basingstoke, Hampshire, RG24 8WA, UK  
Tel: +44-1256-321000, Fax: +44-1256-327755  
E-mail: idec@uk.idec.com

**IDEC ELEKTROTECHNIK GmbH**  
Wendenstrasse 331, D-20537 Hamburg, Germany  
Tel: +49-40-25 30 54-0, Fax: +49-40-25 30 54-24  
E-mail: service@idec.de, www.idec.de

**IDEC AUSTRALIA PTY. LTD.**  
2/3 Macro Court, Rowville, Victoria 3178, Australia  
Toll Free: 1-800-68-4332, Fax: +61-3-9763-3255  
E-mail: sales@au.idec.com

**IDEC IZUMI ASIA PTE. LTD.**  
No. 31, Tannery Lane #05-01, Dragon Land Building,  
Singapore 347788  
Tel: +65-6746-1155, Fax: +65-6844-5995  
E-mail: generalinfo@idecasia.com.sg

**IDEC IZUMI (H.K.) CO., LTD.**  
Unit 1505-07, DCH Commercial Centre No. 25,  
Westlands Road, Quarry Bay, Hong Kong  
Tel: +852-2803-8989, Fax: +852-2565-0171  
E-mail: idec@idechk.com

**IDEC IZUMI (Shanghai) Co., Ltd.**  
Room E, 15F, Majesty Building, No. 138 Pudong Avenue,  
Shanghai 200120, P.R.C.  
Tel: +86-21-5887-9181, Fax: +86-21-5887-8930  
E-mail: idec@cn.idec.com

**IDEC TAIWAN CORPORATION**  
8F, No. 79, Hsin Tai Wu Road, Sec. 1, Hsi-Chih,  
Taipei County, Taiwan  
Tel: +886-2-2698-3929, Fax: +886-2-2698-3931  
E-mail: service@idectwn.com.tw